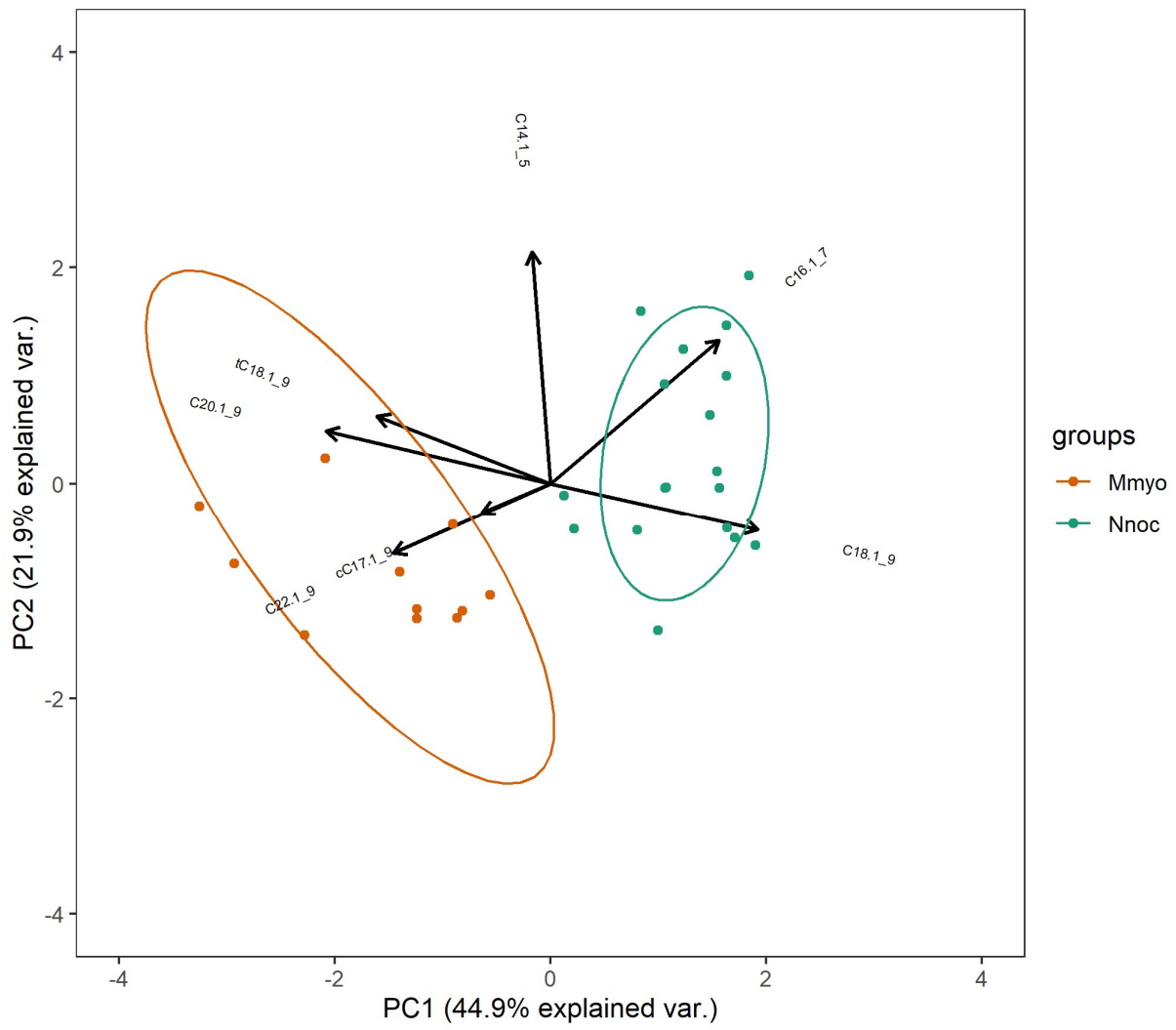
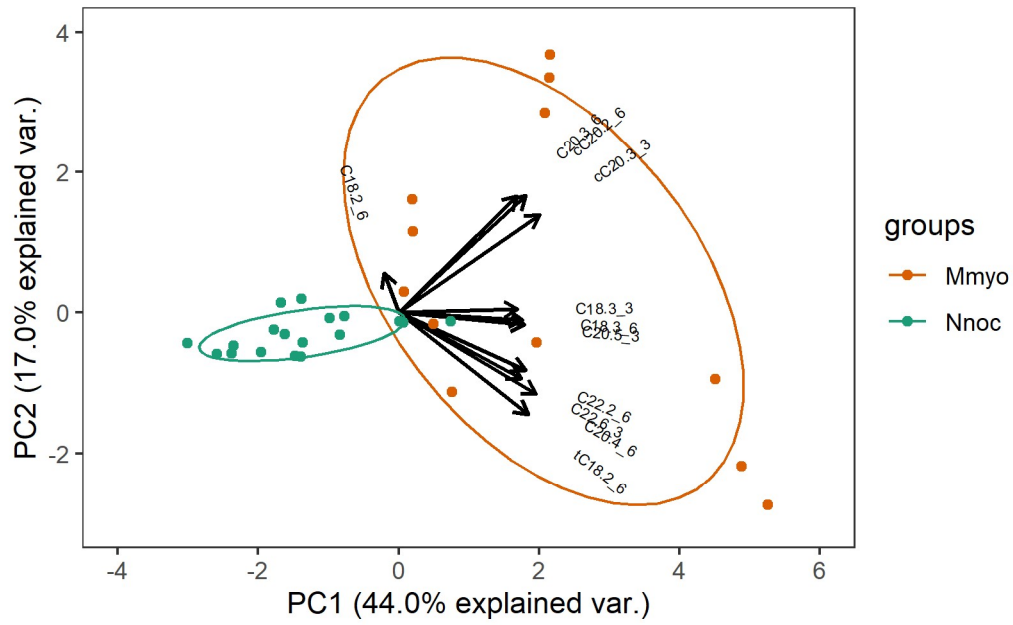


Principal component analysis based on the whole-body fatty acid proportions of two bat species: **Fig. S1**. Saturated fatty acids.



Principal component analysis based on the whole-body fatty acid proportions of two bat species: **Fig. S2**. Monounsaturated fatty acids.



Principal component analysis based on the whole-body fatty acid proportions of two bat species: **Fig. S3**. Polyunsaturated fatty acids.