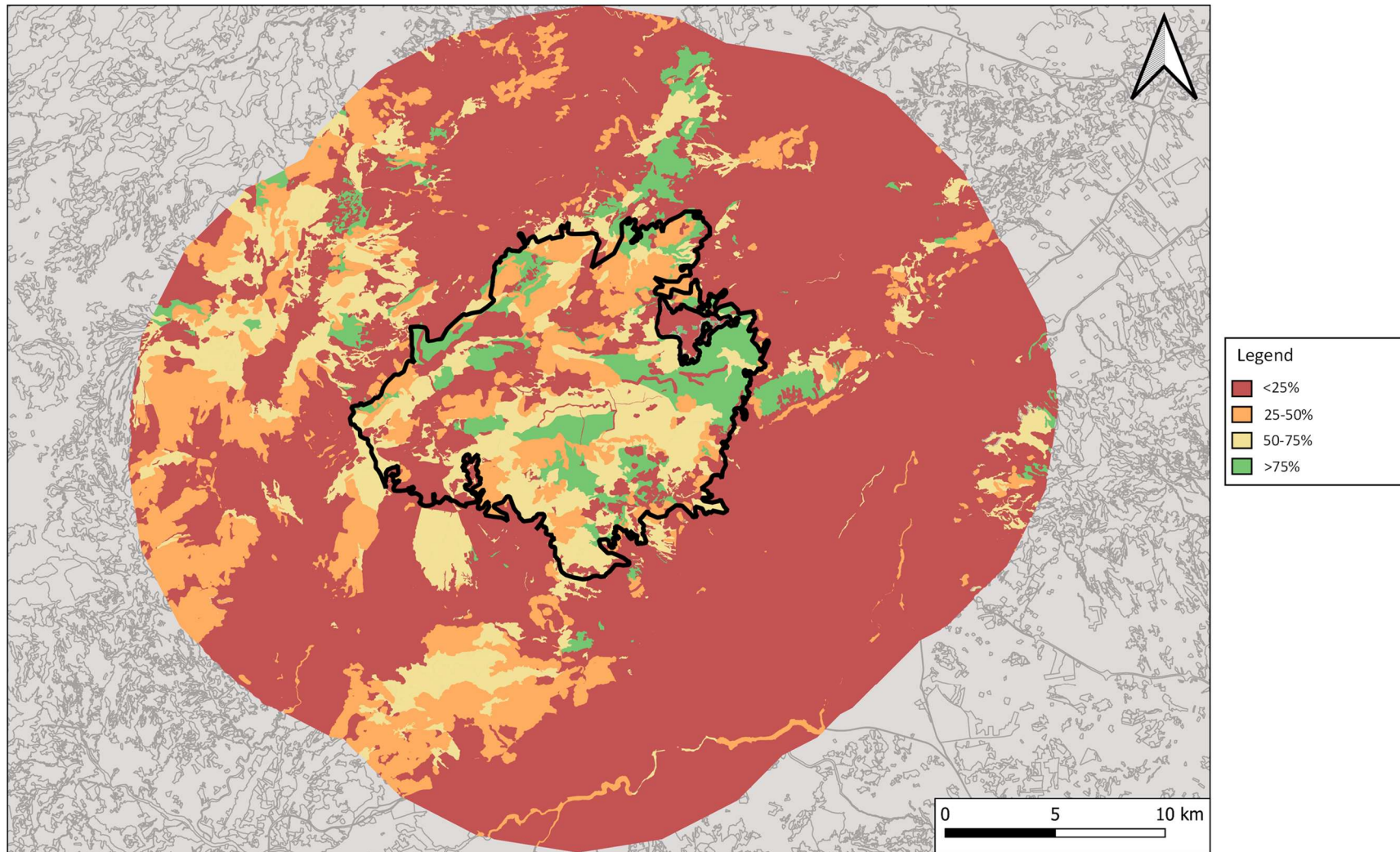


**Supplementary material**

**How an introduced ungulate moves: spatial behaviour of aoudads in Mediterranean mountains**  
DOI: 10.25225/jvb.26006

Corresponding author Roberto PASCUAL-RICO: e-mail: roberto.pacual@goumh.umh.es



**Fig. S1.** Available area (colour) considered in the study, which includes the buffer area around all daytime locations of tracked aoudads, created from the maximum distance registered between two locations of the same individual (12.3 km). Black line is the limit of Sierra Espuña Regional Park where aoudads were tracked. Percentages indicate tree cover.

**Table S1.** Mean  $\pm$  SD of spatial variables analysed. F – females; M – males.

		Winter		Spring		Summer		Autumn		Annual	
Daily distance travelled (Km)	F	1.6 $\pm$ 0.9		1.8 $\pm$ 1.1		1.8 $\pm$ 1.1		1.6 $\pm$ 0.6		1.7 $\pm$ 0.9	
	M	1.5 $\pm$ 0.8		1.9 $\pm$ 0.9		1.5 $\pm$ 0.8		1.6 $\pm$ 0.6		1.6 $\pm$ 0.8	
	Total	1.6 $\pm$ 0.9		1.8 $\pm$ 1.0		1.7 $\pm$ 1.0		1.6 $\pm$ 0.6		1.7 $\pm$ 0.9	
		K95	K50	K95	K50	K95	K50	K95	K50	K95	K50
Seasonal home range (Km <sup>2</sup> )	F	14.2 $\pm$ 9.4	3.8 $\pm$ 2.7	8.6 $\pm$ 7.1	1.8 $\pm$ 1.8	9.8 $\pm$ 11.9	1.8 $\pm$ 2.0	5.6 $\pm$ 2.5	1.3 $\pm$ 0.7	9.4 $\pm$ 8.5	2.1 $\pm$ 2.0
	M	20.4 $\pm$ 17.7	3.8 $\pm$ 2.9	8.5 $\pm$ 10.5	1.6 $\pm$ 1.8	6.0 $\pm$ 2.3	1.0 $\pm$ 0.5	9.3 $\pm$ 5.6	2.3 $\pm$ 1.3	10.3 $\pm$ 10.5	2.0 $\pm$ 1.9
	Total	16.5 $\pm$ 12.2	3.8 $\pm$ 2.6	8.6 $\pm$ 8.3	1.7 $\pm$ 1.7	8.4 $\pm$ 9.5	1.5 $\pm$ 1.6	7.0 $\pm$ 4.0	1.7 $\pm$ 1.0	9.7 $\pm$ 9.2	2.0 $\pm$ 1.9
Daily home range (Km <sup>2</sup> )	F	1.3 $\pm$ 3.4	0.4 $\pm$ 1.1	1.4 $\pm$ 4.0	0.4 $\pm$ 1.1	1.7 $\pm$ 6.5	0.4 $\pm$ 1.4	0.9 $\pm$ 0.9	0.2 $\pm$ 0.2	1.4 $\pm$ 4.4	0.4 $\pm$ 1.1
	M	0.9 $\pm$ 1.5	0.2 $\pm$ 0.4	1.2 $\pm$ 1.9	0.3 $\pm$ 0.4	0.8 $\pm$ 2.2	0.2 $\pm$ 0.4	0.9 $\pm$ 0.9	0.3 $\pm$ 0.3	0.9 $\pm$ 1.7	0.3 $\pm$ 0.4
	Total	1.1 $\pm$ 2.8	0.3 $\pm$ 0.9	1.3 $\pm$ 3.7	0.4 $\pm$ 1.0	1.5 $\pm$ 5.7	0.4 $\pm$ 1.3	0.9 $\pm$ 0.9	0.3 $\pm$ 0.2	1.2 $\pm$ 3.8	0.3 $\pm$ 0.9
Daily overlap (from 0 to 1)	F	0.52 $\pm$ 0.33	0.31 $\pm$ 0.32	0.58 $\pm$ 0.33	0.36 $\pm$ 0.33	0.57 $\pm$ 0.32	0.32 $\pm$ 0.31	0.54 $\pm$ 0.31	0.32 $\pm$ 0.29	0.55 $\pm$ 0.33	0.33 $\pm$ 0.32
	M	0.53 $\pm$ 0.36	0.32 $\pm$ 0.33	0.54 $\pm$ 0.33	0.27 $\pm$ 0.29	0.54 $\pm$ 0.38	0.28 $\pm$ 0.36	0.53 $\pm$ 0.33	0.34 $\pm$ 0.35	0.53 $\pm$ 0.35	0.31 $\pm$ 0.33
	Total	0.52 $\pm$ 0.34	0.31 $\pm$ 0.32	0.57 $\pm$ 0.33	0.34 $\pm$ 0.32	0.56 $\pm$ 0.34	0.31 $\pm$ 0.33	0.54 $\pm$ 0.32	0.33 $\pm$ 0.31	0.55 $\pm$ 0.33	0.32 $\pm$ 0.32

**Table S2.** Mean daily distance travelled (km) by aoudad  $\pm$  SD.

<b>ID</b>	<b>Daily distance travelled</b>
15810	1.7 $\pm$ 0.8
15811	2.0 $\pm$ 1.5
15812	1.8 $\pm$ 0.6
15812 b	1.3 $\pm$ 0.6
15813	1.6 $\pm$ 0.6
15814	1.3 $\pm$ 0.5
15815	1.8 $\pm$ 0.6
15816	1.5 $\pm$ 0.7
15817	1.6 $\pm$ 0.8
15818	1.5 $\pm$ 1.0
<b>Total</b>	<b>1.7 <math>\pm</math> 0.9</b>

**Table S3.** Percentage (%) of tree cover in the available area, and total and by season proportion tree cover assigned to aoudad GPS locations.

<b>Tree cover</b>	<b>Available</b>	<b>Winter</b>	<b>Spring</b>	<b>Summer</b>	<b>Autumn</b>	<b>Total</b>
< 25%	66.5	27.4	19.5	18.9	19.3	21.3
25-50%	12.5	15.6	16.1	7.0	18.9	14.2
50-75%	15.0	35.5	40.8	37.4	34.0	37.1
> 75%	6.0	21.5	23.6	36.7	27.8	27.4